



TempTale® GEO Eagle

Real Time Quality & Compliance Solution for Suppliers

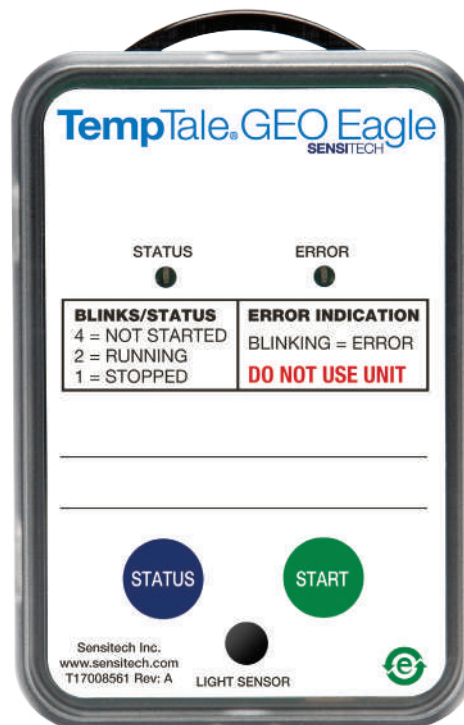
TempTale® Geo Eagle Datalogger and SensiWatch™ Tracks Software

Fresh fruits and vegetables are complex commodities when it comes to maintaining quality. Yet getting produce from the farm or packhouse to the customer is often hidden behind the transportation screen, and completely out of both the shipper and receiver's control. Change is here.

Sensitech Inc. is introducing the TempTale® GEO Eagle datalogger: a cost-effective, real-time, temperature monitor that transmits time, temperature, and location data back to the shipper. Easy to integrate into any shipment protocol; simply initiate a shipment, start the monitor, position it inside the load, and forget it—actionable data is automatically transmitted to email or text messaging, or just a serial number entry away. Save in-transit loads. Understand route performance; reduce rejected loads and product loss.

Key Features and Benefits

- Simple activation; easily integrates into shipper's protocol
- Tactile button initiation gives clear LED direction for monitor status
- Light sensor for evidence of door opening, and possible temperature compromise
- Supports temperature accuracy to +/- 0.5°C
- Simply initiate a shipment, start the monitor, place it on a load, and view shipment condition via serial number look-up
- 90 day battery shelf life supports localized inventory management
- No-worry returns; recycling encouraged, yet no penalties for unreturned monitors
- Track shipments via SensiWatch™ Tracks, a newly created web-based portal designed to enable viewing shipment data privately or publically through serial number view; shipment originators determine who sees what
- Trip details viewed via map display that includes detailed temperature data



TempTale® GEO Eagle

TempTale® Geo Eagle Specifications	
Sensor Types	Temperature, Light
Temperature Range for Storage	-20°C to +55°C (-4°F to +131°F)
Temperature Measurement Range	-20°C to +55°C (-4°F to +131°F)
Environmental Rating	IP64
Temperature Accuracy Range	NIST® traceable: ± 1.0°C from -20°C to -10°C (-4°F to +14°F) ± 0.5°C from -10°C to +45°C (+14°F to +113°F) ± 1.0°C from +45°C to +55°C (+113°F to +131°F)
Temperature Resolution	0.1°
Light Sensor	0-400 lux
Temperature Measurement Responsiveness	Meets the requirements of USP 1118 and EN12830
Start Up Delay	Optional 5 minutes to 12 hours, in 5 minute intervals
Cellular Communications	Global Quad-band GSM (850, 900, 1800, 1900 MHz), GPRS data
Location Method	Cellular-based location
Data Logger Memory Type	Non-volatile EEPROM
Battery Type	High Capacity Internal Lithium Battery; Shelf Life: 90 days
Battery Life/Reporting Interval	<ul style="list-style-type: none"> • 15 minute reporting interval: Operating duration 7 days continuous • 30 minute reporting interval: Operating duration 17 days continuous • 60 minute reporting interval: Operating duration 26 days continuous
Temperature Sampling Interval	Variable from 5 minutes to 2 hours; factory configurable
Housing	UL 94-V0 flame retardant plastic
Dimensions	101 mm x 65 mm x 29 mm
Weight	280 gr (10 oz)
Certifications	FCC; CE; RoHS; WEEE; IEC standard EN61000-4-2 Level 4 EN61000-6-3:2007+A1:2011; EN61000-6-1:2007+A1:2007 RTCA/DO-160: Section 20 – RF Susceptibility (Radiated) – Category S and Section 21 – Emissions of RF (Radiated) – Category M and H.
Device Interface	STATUS and START push buttons; STATUS and ERROR LEDs
Real-Time Software Interface	<ul style="list-style-type: none"> • Web based portal: SensiWatch™ Tracks 3.4 • Email notifications



SensiWatch™ Tracks— Designed for Supply Chain Efficiency

Visibility begins when the shipment begins—the more information collected up-front about the shipment, the better the analysis will be at the conclusion of the shipment. This is an important fact for all parties involved—shippers, receivers, and logistics providers.

SensiWatch Tracks Features and Benefits

- View data in multiple ways to best suit your business needs:
 - Individual Trip Detail featuring shipment details, statistics, alarms, current location, and a temperature graph.
 - Map View showing the location of in-transit devices with mouse-over capabilities for detail.
 - Directory View highlighting shipment attributes with status in a tabular format.
- Configurable condition status automatically triggers email notifications.
- Public or private status enables direct serial number login to check trip status.
- Develop alarm configurations easily within SensiWatch Tracks: sensor excursion and departure/arrival notifications, along with support for multiple alarm definitions per trip.
- Supports hassle-free software updates through a browser-based interface.
- Customized reports configurable by user:
 - Filter and group by product, origin, destination, carrier, and date range.
 - View many trips in aggregate or drill down to single trip detail.
 - Compare temperature statistics among groups.
 - Rank performance by top ten key performance indicators (KPI).
 - Monitor changes in KPIs over time to spot trends.
 - Determine appropriate alarm sensitivity to avoid “alarm fatigue.”

Serial Number Tracking

Public or private settings enable read-only view to be shared online. Simply choose the setting at shipment set up.

The screenshot shows the 'Create Shipment' form in SensiWatch Tracks. It is divided into several sections:

- Monitor / Device:** A field for 'Serial Number'.
- Shipment Attributes:**
 - *Program: Program K3AP
 - *Product: Grapes
 - *Origin: Miami FL
 - *Destination: Honolulu HI
 - Order Number: 33323322
 - Customer Reference Number: BOL234345
 - Planned Departure Time: 07:00 am, 31 Jan 2017
 - Planned Arrival Time: 10:00 pm, 30 Jan 2017
 - Carrier: AC
 - Trailer ID: TX645786
 - Shipment Notes: (empty)
- Public/Private:** Radio buttons for 'Public' (selected) and 'Private'. A tooltip explains: "Selecting public will allow the trip details to be visible to anyone entering the monitor's serial number. more..."

Buttons at the bottom include 'Save', 'Save + Create New', and 'Clear All'.

Map View

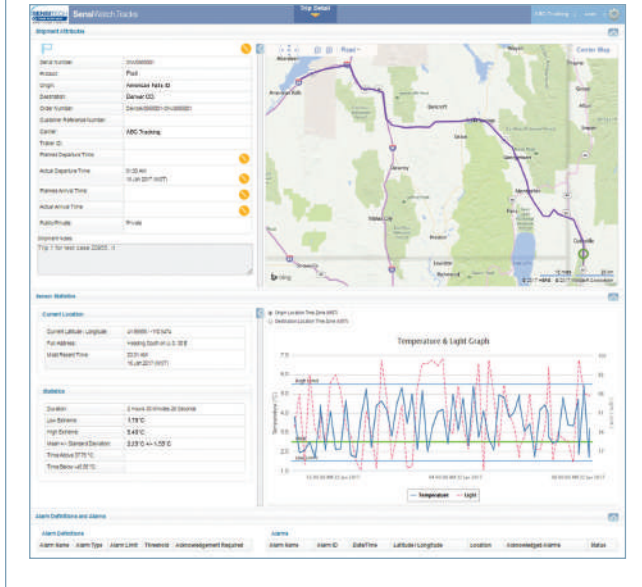
Overview of all in-transit shipments and their current status, updated in real-time as new data is collected.

- Zoom in/out for ideal viewing
- Filter view by product, origin, destination, alarm status
- Click on any shipment to view trip details
- Flag trips for reference



Trip Detail View

Comprehensive trip details including shipment attributes, map, temperature/light graph, and location status information.



Directory View

View shipment details in an easy-to-read tabular format. Filters applied in either Map View or Directory View are automatically populated to the others for consistency.

Ship Name	Status	Date	Product	Origin	Destination	Ship Number	Color	Assignment Time	Destination Date	Assigned Date	Action
123456789	In Transit	2017-01-15	Product A	Origin A	Destination B	123456789	Red	2017-01-15 10:00:00	2017-01-15 12:00:00	2017-01-15 11:00:00	[Icons]
987654321	Delivered	2017-01-14	Product B	Origin C	Destination D	987654321	Blue	2017-01-14 08:00:00	2017-01-14 10:00:00	2017-01-14 09:00:00	[Icons]

Sensitech Inc. is focused on delivering supply chain visibility solutions that track, monitor and protect products for global leaders in the food, life sciences, consumer goods, and industrial markets. Our solutions are focused in three key areas: quality and compliance, supply chain security, and logistics performance management. Quality and compliance solutions address temperature-sensitive, complex supply chains focused on delivering the highest quality possible, while our supply chain security solutions help to mitigate risks associated with theft, diversion and chain of custody. Sensitech's logistics performance solutions deliver origin-to-destination, real-time transparency to any in-transit journey. Sensitech Inc. is an ISO 9001:2008 company, headquartered in Beverly, Mass., with more than 35 sales, service and distribution locations around the world. Sensitech is a part of UTC Climate, Controls & Security, a unit of United Technologies Corp., a leading provider to the aerospace and building systems industries worldwide. Visit www.sensitech.com for additional information. © 2017 Sensitech Inc. All Rights Reserved. Unless otherwise indicated, all trademarks and service marks are the property of Sensitech Inc. NIST is a registered trademark of The National Institute of Standards and Technology Agency of the United States Government.